



At London & Quadrant we pride ourselves on creating homes for a contemporary lifestyle and with Stratford Eye this is no exception.

info@stratfordeye.com
 020 8555 5014
 www.stratfordeye.com



www.site-sales.co.uk

These brief particulars have been prepared and are intended as a guide to supplement an inspection or survey and do not form, or form part of, any offer or contract. Their accuracy is not guaranteed. They contain statements of opinion and in some instances we have relied on information supplied by others. Design elements and specification details may change without further notice. You should verify the particulars on your visit to the site, and the particulars do not obviate the need for a survey and all the appropriate enquiries. Accordingly, there shall be no liability as a result of any error or omission in the particulars or any information given. All measurements given herein are approximate, not to scale and for indicative purposes only. Stratford Eye is a marketing name only and may not be adopted as the postal address. Designed by Four Corners Advertising, www.fourcornersadvertising.co.uk November 2008



Stratford Eye

A new vision in Stratford

A brand new building has emerged above the Skyline in the London Borough of Newham. Stratford Eye. A stunning new tower, full of ultra modern apartments and stunning penthouses that is fast becoming one of the most sought after addresses in London.

The architecturally stunning development offers spectacular views over the city, and has become part of one of the greenest areas in London.

With the 2012 Olympic Village on its doorstep, Stratford Eye will soon benefit from the inevitable buzz of an area, which is already rich in culture and spirit.

The apartments and penthouses are available to view now, so please call to make an appointment soon to avoid disappointment.



Apartments with style and flair



At London & Quadrant we pride ourselves on creating homes for a contemporary lifestyle and with Stratford Eye this is no exception.

General

- Flush Ash doors
- Telephone and TV Point to lounge and bedroom 1
- Mains powered Smoke detectors with battery back up throughout
- Radiator heating via CHP plant
- Smooth, white-painted ceilings and walls
- Double glazed windows and doors
- Telguard Video entry phone system
- Communal satellite dish - occupiers to subscribe individually (Sky plus ready)
- 6 Lever mortice lock to front door
- Lift and stairs to all floors (in Tower only)
- In line with government strategy regarding sustainable energy and reduced CO2 emissions, the delivery of heat, power and water at Stratford Eye is via the on-site CHP plant, streamlining utility services for residents.

Kitchen

- Contemporary fitted kitchen with high-gloss worktops
- Under-unit lighting
- Stainless Steel electric oven, ceramic hob, extractor hood, hob splashback
- Integrated dishwasher
- Washer dryer

- Fridge/Freezer or Fridge.
- Ceramic tiled flooring
- Downlighters

Bathrooms and en-suites

- Contemporary White suite with high-quality Hansgrohe bathroom tapware
- Inset washbasin with tiled worktop
- Large wall mirror behind basin
- Heated Towel rails - independent of central heating loop.
- En suites house a glass-screened shower cubicle with thermostatic shower unit
- Porcelain tiling to walls and floors
- Downlighters

Floors 12 to 17

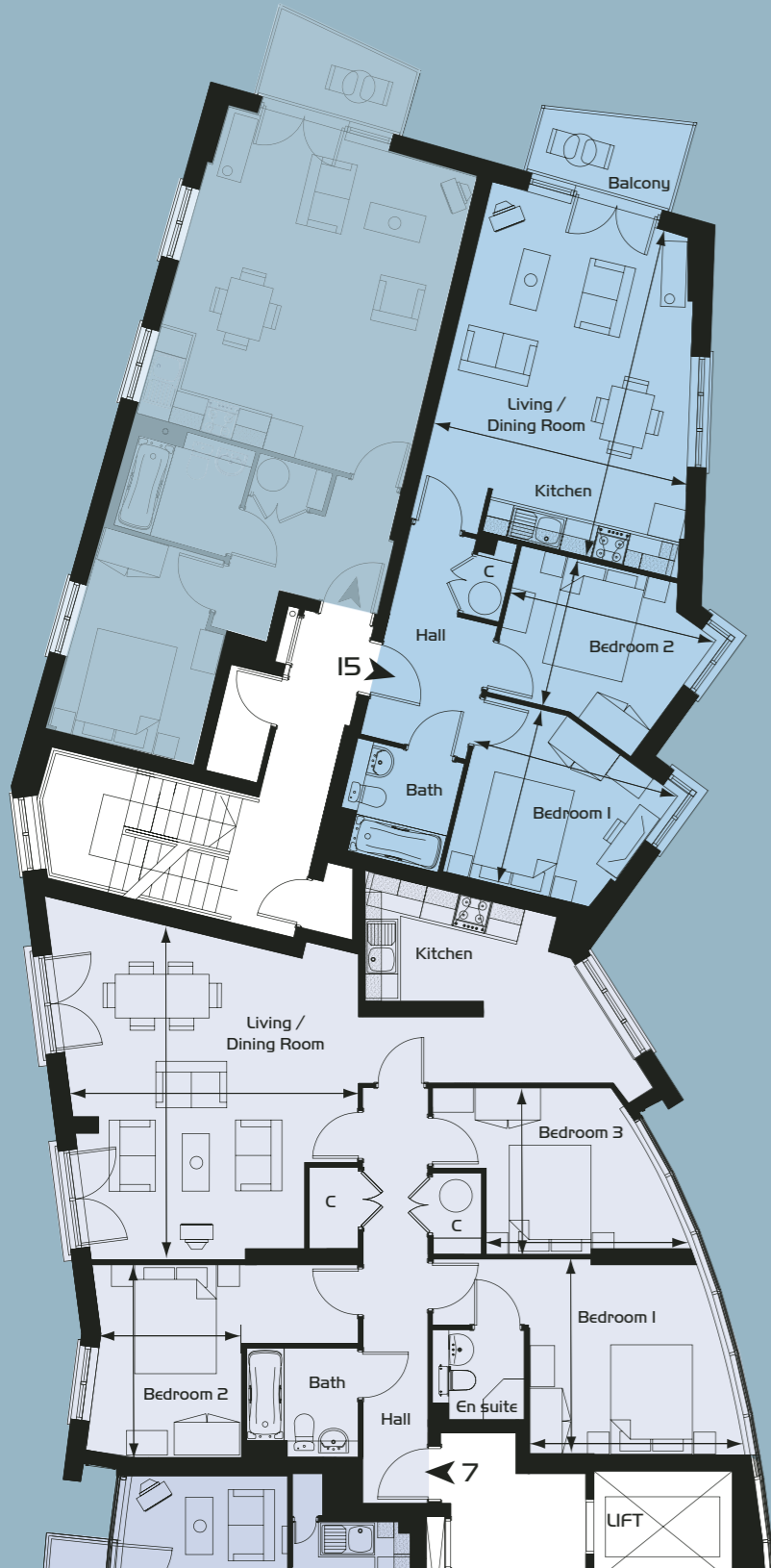
In addition to the above...

- Granite worktops, upstands and splashbacks
- Laminate floor to hallways and lounge
- Neutral carpeting to bedrooms



Apartments Floors 1 - 3

Apartments Floors 1 - 17



3RD-15

Living/Dining/Kitchen
6171 x 4864mm 20' 3" x 16' 0"

Bedroom 1
3870 x 3309mm 12' 8" x 10' 10"

Bedroom 2
3870 x 2761mm 12' 8" x 9' 1"

1ST-7

Living/Dining/Kitchen
6067 x 5334mm 19' 11" x 17' 6"

Bedroom 1
4068 x 3609mm 13' 4" x 11' 10"

Bedroom 2
3534 x 2581mm 11' 7" x 8' 6"

Bedroom 3
3859 x 2953mm 12' 8" x 9' 8"

THE FREEMAN

11TH-41 17TH-59
15TH-53

Living/Dining/Kitchen
9356 x 4566mm 30' 8" x 15' 0"

Bedroom 1
3805 x 3654mm 12' 6" x 12' 0"

Bedroom 2
3503 x 3211mm 11' 6" x 10' 6"

THE THOMPSON

1ST-8 13TH-48 17TH-60
7TH-30 15TH-54
9TH-36 16TH-57

Living/Dining/Kitchen
4830 x 3858mm 15' 10" x 12' 8"

Bedroom 1
3780 x 3561mm 12' 5" x 11' 8"

Bedroom 2
3150 x 2578mm 10' 4" x 8' 6"

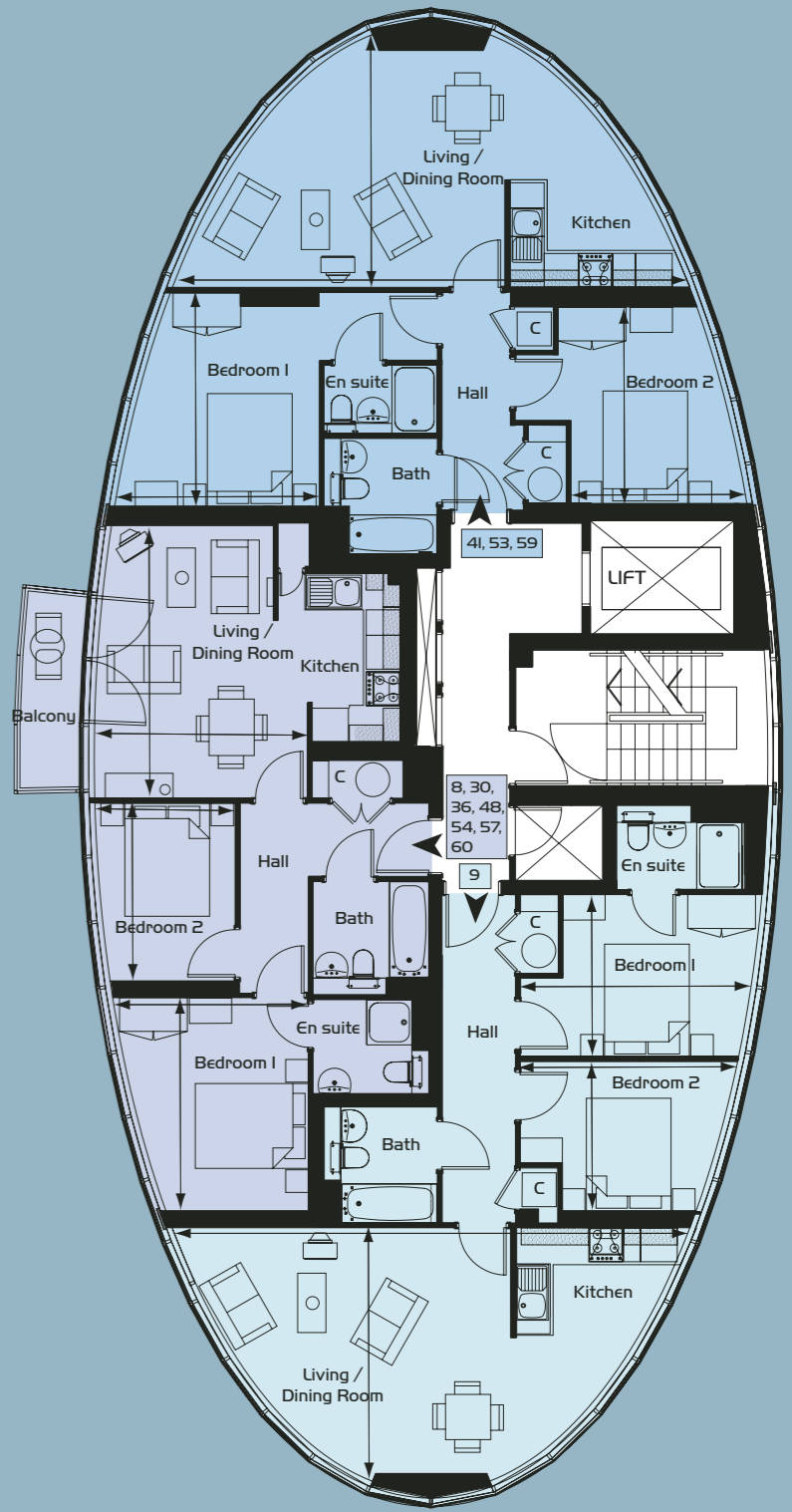
THE ARMSTRONG

1ST-9

Living/Dining/Kitchen
9365 x 4580mm 30' 9" x 15' 0"

Bedroom 1
4184 x 2874mm 13' 9" x 9' 5"

Bedroom 2
3949 x 2647mm 12' 11" x 8' 8"



The Penthouse View



Penthouses Lower Floor

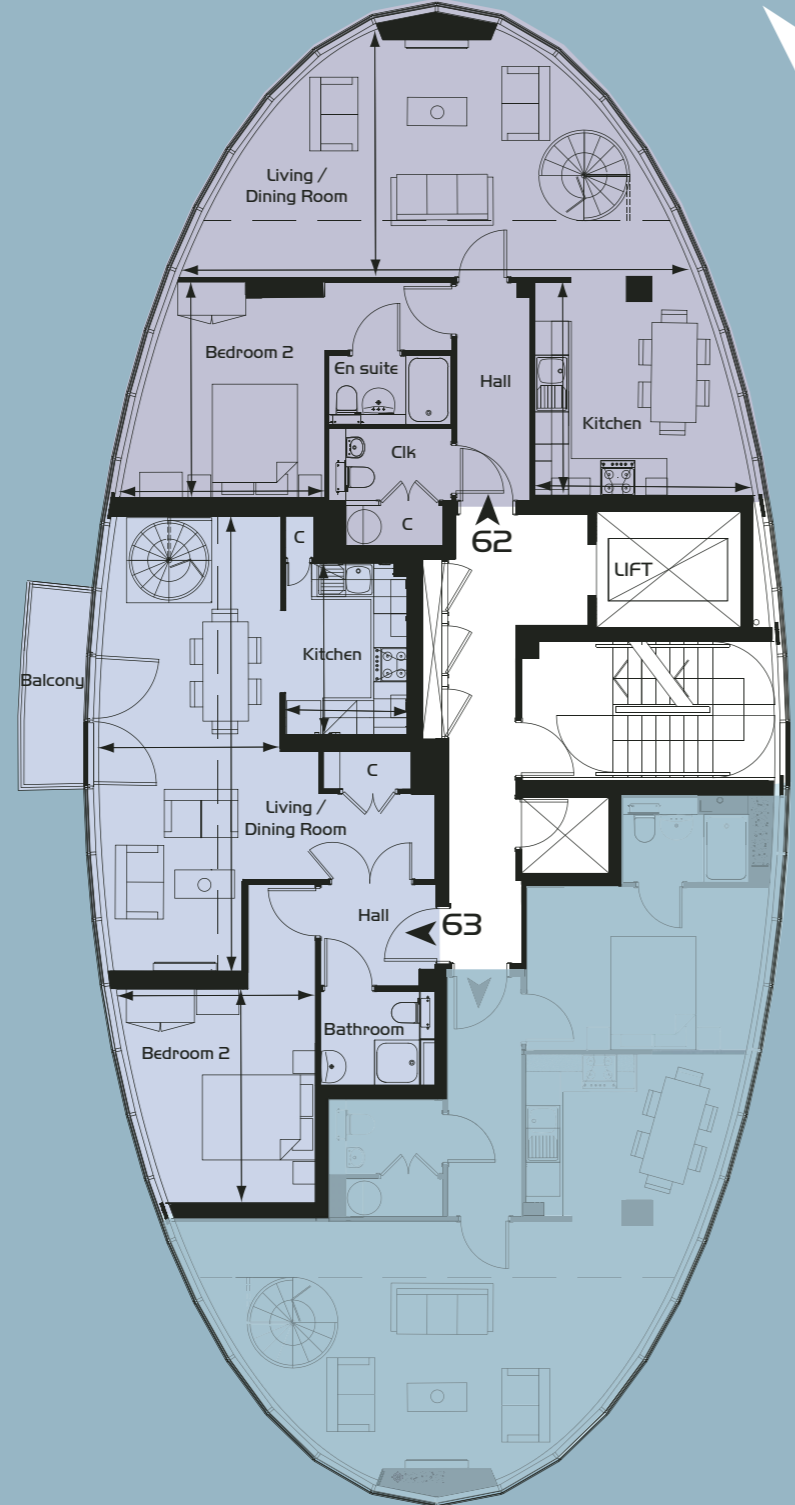
Penthouses Upper Floor

THE REDGRAVE LOWER PENTHOUSE 62

- Living/Dining
9242 x 4488mm 30' 4" x 14' 9"
- Kitchen
3923 x 3765mm 12' 10" x 12' 4"
- Bedroom 2
3801 x 3704mm 12' 6" x 12' 2"

THE LEWIS LOWER PENTHOUSE 63

- Living/Dining
8061 x 3263mm 26' 5" x 10' 8"
- Kitchen
3085 x 2144mm 10' 1" x 7' 0"
- Bedroom 2
3777 x 3575mm 12' 5" x 11' 9"



THE REDGRAVE UPPER PENTHOUSE 62

- Study
4799 x 3960mm 15' 9" x 13' 0"
- Bedroom 1
3801 x 3705mm 12' 6" x 12' 2"

THE LEWIS UPPER PENTHOUSE 63

- Study
4855 x 3509mm 15' 11" x 11' 6"
- Bedroom 1
3784 x 3575mm 12' 5" x 11' 9"

